

AFTERCARE INSTRUCTIONS

These products have a high quality, durable finish which in order to preserve, should be treated with care.

Clean with warm soapy water and a soft damp cloth only.

Cleaning products, including non-scratch ones could damage the finish.

CUSTOMER SERVICE

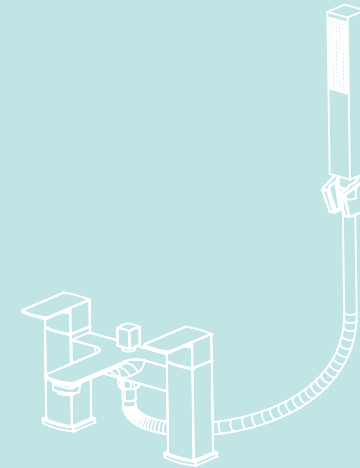
t: +44(0)208 686 5100
e: technical@saneux.com

Iain Stewart Centre, Beehive Ring Road,
Gatwick, RH6 0PB

www.saneux.com

INTENT

INSTALLATION INSTRUCTIONS



NTBSMO3
Bath Filler, Shower Mixer

saneux

Installation

Please note if installing in an enclosed environment, access should be left for servicing and maintenance.

1. Before making any inlet pipe connections, all supply pipes must be thoroughly flushed to remove debris. Failure to do so could result in damage or low flow from the mixer unit.
2. Refer to the components diagram and ensure all components are present before installation.
3. Place the Bath Filler on the bath surface and fit the flexible hoses to the Bath filler using an appropriate spanner, make sure the hoses are not over tightened.
4. Fit the Filler to the bath surface using the supplied rubber washer and fixing nuts in the order indicated in the drawing. **DO NOT** overtighten as this may damage the bath. Remember to install the rubber O-ring between the Bath filler body and the bath surface.
5. Connect the water supply to the flexible hoses. Hot supply should always be connected to the left hose.
6. If you are installing the Bath shower mixer, screw the shower hose into both the Handset and the Bath Filler.
7. If you are installing the Bath shower mixer, drill holes for the wall mounted handset holder, insert the wall plugs and secure the holder with the provided screws.
7. Fully open the mixer on both hot & cold sides and allow the water to run for approximately one minute to further flush the system.
8. Check all connections and ensure there are no leaks.

