

AFTERCARE INSTRUCTIONS

When using chlorine-based cleaners to clean the pan bowl, ensure that these do not come into contact with the seat. Keep the seat and cover in an upright position during cleaning to avoid discolouration of surfaces or rusting of metal parts.

CUSTOMER SERVICE

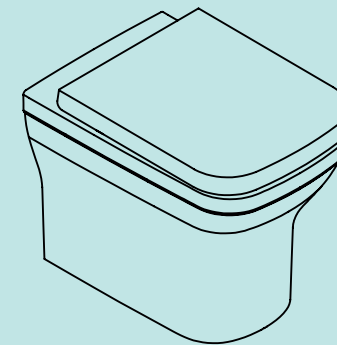
t: +44(0)208 686 5100
e: technical@saneux.com

4 Imperial Way
Croydon CR0 4RR

www.saneux.com

INDIGO

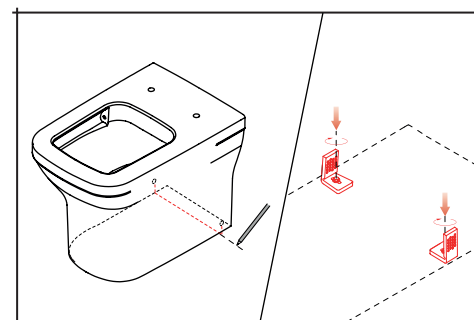
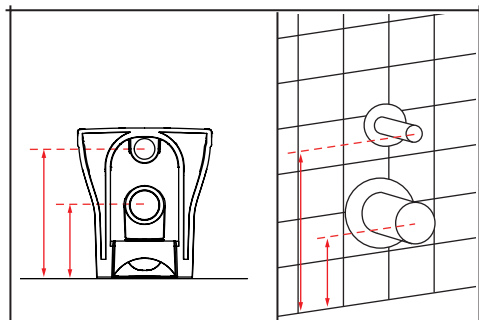
INSTALLATION INSTRUCTIONS



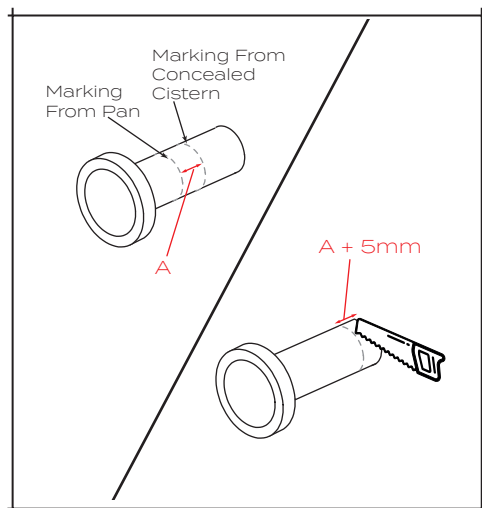
INDBTWO1

saneux

1. Measure the height of the inlet and outlet holes from the floor. Install the cistern and connecting pipework at the measured heights. Test the cistern prior to installing the pan to ensure there are no leaks or issues with the flushing. Check that you have the pan fixings.

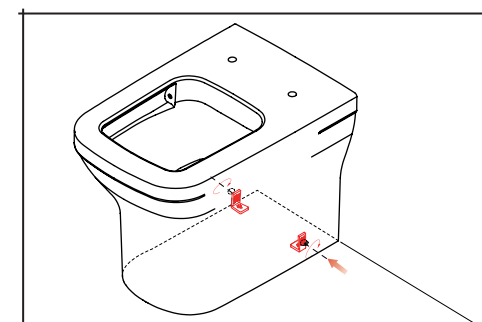


4. With the pan in location, mark the position of the holes on the floor. Measure the ceramic thickness of the pan and mark the approximate location of the floor fixings. Drill a hole on the ground and locate the plugs so they are flush with the ground. Tighten the floor fixings.

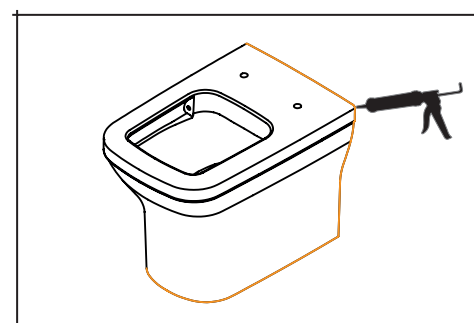
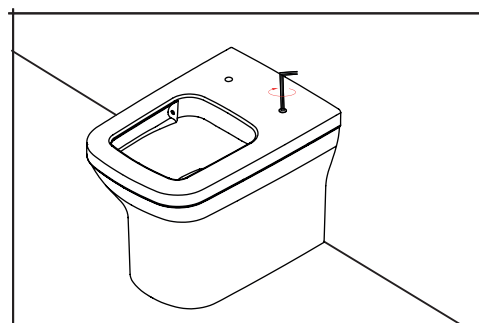


2. Place the Inlet and outlet pipes on the Wc pan and mark where they extend past the edges of the bowl. Then place the pipes completely onto the cistern and mark them where they emerge from the unit. Measure the space between the marks on the pipes (distance A), carry this measurement over to the end of the pipes, adding 5mm and then cut off the end. Use a file to smooth the pipe ends, before securing the pipes into the cistern unit.

5. Check that the back of the pan fully meets the wall. Remove the pan and further tighten the floor fixings. Return the pan to the desired location. Pay attention that the pipe fittings are connected with the tubes and secure the screws to the floor fixings through the holes on the sides of the pan.



3. Place the new toilet on the wall. Use the provided allen key to tighten the fixings and level the toilet. Flush the system and check for any leaks.



6. Add a consistent line of silicone sealant around the back of the pan, creating a watertight seal between the pan and the wall. Allow to cure for 24hr before wetting. Place the cover caps provided over the holes on the side of the pan.

7. Install the seat according to the fitting instructions included in the seat's box.